



MIXED-USE PROJECTS



233 VAUGHAN STREET
Portsmouth, NH

**Municipal Approvals • Historic District Approvals •
Construction Documents • Construction Administration •
Commercial Interior Design**

3 Commercial Units / 9 Residential Units
Office/Retail Design
Lower-Level Parking Garage
Rooftop Deck



145 BREWERY LANE
Portsmouth, NH

**Municipal Approvals • Construction Documents •
Construction Administration**

92 Rental Units
Roof Top Deck, Amenities
Balconies, Patios
Lower-Level Parking Garage



PISCATAQUA LANDING
Portsmouth, NH

**Municipal Approvals • Historic District Approvals •
Construction Documents • Construction Administration •
Commercial Interior Design**

3 Commercial Units
4 Residential Units
Lower-Level Parking Garage



PISCATAQUA LANDING
Portsmouth, NH

**Municipal Approvals • Historic District Approvals •
Construction Documents • Construction Administration •
Commercial Interior Design**

Historic Restoration
6 Residential Units



MIXED-USE PROJECTS



PISCATAQUA LANDING *Portsmouth, NH*

**Municipal Approvals • Historic District Approvals •
Construction Documents • Construction Administration**

4 Residential Units
Lower-Level Parking Garage



RUTH LEWIN GRIFFIN PLACE *Portsmouth, NH*

**Municipal Approvals • Historic District Approvals •
Construction Documents • Construction Administration**

64 Affordable Rental Units
Roof Top Deck, Amenities
Lower-Level Parking Garage
LEED Gold



25 MAPLEWOOD AVENUE *Portsmouth, NH*

**Municipal Approvals • Historic District Approvals •
Construction Documents • Construction Administration •
Commercial Interior Design**

4 Commercial Units
9 Residential Units
Office/Retail
Lower-Level Parking Garage



THE GRANARY *Portsmouth, NH*

**Municipal Approvals • Historic District Approvals •
Construction Documents • Construction Administration •
Commercial Interior Design**

5 Commercial Units / 6 Residential Units
Existing Building Historic Renovation
Lower-Level Parking Garage



MIXED-USE PROJECTS



PARKSIDE PLACE *Portsmouth, NH*

**Municipal Approvals • Historic District Approvals •
Construction Documents • Construction Administration •
Commercial Interior Design**

2 Commercial Units / 9 Residential Units
Existing Building Historic Renovation
Garage & Surface Parking
Roof Top Deck



SCENIC SALINGER *Rochester, NH*

**Municipal Approvals • Construction Documents •
Construction Administration**

2 Commercial Units / 48 Residential Units
Existing Building Historic Renovation
Garage Parking
Roof Top Deck



ISLINGTON PLACE *Portsmouth, NH*

**Municipal Approvals • Historic District Approvals •
Construction Documents • Construction Administration**

14 Residential Units
Parking Garage with Lifts
Historic Renovation
Roof Top Deck



SHEPARD'S COVE DEVELOPMENT *Kittery, ME*

Construction Documents • Construction Administration

90 Active Adult Units
Mid-rise, Duplex, and Cottage Styles
Boathouse
NAHB Active-Adult Community Silver Award



MULTI-FAMILY PROJECTS



ATKINSON HEIGHTS
Atkinson, NH

**Municipal Approvals • Construction Documents •
Construction Administration**

288 Condominium Units
Nine Mid-Rise Buildings
Lower-Level Parking Garage
Clubhouse
Abuts Atkinson Country Club Golf Course



RESIDENCES AT 27 CHESTNUT
Exeter, NH

Construction Documents • Construction Administration

96 Rental Units
Two Mid-Rise Buildings
Lower-Level Parking Garage



BLUEGILL LODGE AT MEREDITH BAY
Laconia, NH

Construction Documents • Construction Administration

24 Mid-Rise Condominium Units
Lakeside Community
Lower-Level Parking Garage



SPINDLE VIEW TOWNHOMES
Laconia, NH

Construction Documents • Construction Administration

26 Townhome Condominium Units
Lakeside Community
Lower-Level Parking Garage



MULTI-FAMILY PROJECTS



RAY FARM DEVELOPMENT *Exeter, NH*

**Municipal Approvals • Construction Documents •
Construction Administration**

116 Condominium Units
Four Mid-Rise Buildings
Lower-Level Parking Garage
Clubhouse



MEREDITH BAY POOL PAVILION *Meredith, NH*

Construction Documents • Construction Administration

Community Building
Timber Frame Construction
1,214 square feet



RAY FARM CLUBHOUSE *Exeter, NH*

**Municipal Approvals • Construction Documents •
Construction Administration • Interior Design**

Community Building
Exposed Wood Construction
1,782 square feet



SHEPARDS COVE BOATHOUSE *Kittery, ME*

Construction Documents • Construction Administration

Community Building
Boat Storage



MULTI-FAMILY PROJECTS



FOREST RIDGE TOWNHOMES *Exeter, NH*

Construction Documents • Construction Administration

2 Townhome Buildings
4 Market Rate Units each building



FOREST RIDGE COTTAGES *Exeter, NH*

Construction Documents • Construction Administration

36 Condominium Units
Multifamily and Cottage Styles
Eight Townhomes
Two buildings / 4 Market Rate Units each
Four buildings / 5 Affordable Units each



RIVERWALK PLACE TOWNHOMES *Manchester, NH*

Construction Documents • Construction Administration

46 Townhome Condominium Units
Riverside Community



WATSON WOODS HOUSING *Exeter, NH*

Construction Documents • Construction Administration

4 Buildings
5 Affordable Units each



RESIDENTIAL PROJECTS



CAPTAIN'S HOUSE
Portsmouth, NH

**Municipal Approvals • Historic District Approvals
Construction Documents • Construction Administration
Interior Design**



OCEANFRONT RESIDENCE
Rye, NH

**Municipal Approvals • Construction Documents
Construction Administration • Interior Design**



OCEANFRONT POOL HOUSE
Rye, NH

**Municipal Approvals • Construction Documents
Construction Administration • Interior Design**



SUBURBAN HIDEAWAY
North Hampton, NH

Construction Documents



RESIDENTIAL PROJECTS



WOODLAND RETREAT
Ogunquit, ME

**Municipal Approvals • Construction Documents
Construction Administration • Interior Design**



PISCATAQUA PENTHOUSE
Portsmouth, NH

**Municipal Approvals • Historic District Approvals
Construction Documents • Construction Administration
Interior Design**



MODERN LIVING
Portsmouth, NH

**Municipal Approvals • Construction Documents
Construction Administration • Interior Design**



COASTAL CLASSIC
Rye, NH

**Municipal Approvals • Construction Documents
Construction Administration • Interior Design**



RESIDENTIAL PROJECTS



CONTEMPORARY SPLENDOR
Portsmouth, NH

**Municipal Approvals • Historic District Approvals
Construction Documents • Construction Administration
Interior Design**



NORTH END SUITE
Portsmouth, NH

**Municipal Approvals • Construction Documents
Construction Administration • Interior Design**



WATERFRONT OVERLOOK
Portsmouth, NH

**Municipal Approvals • Construction Documents
Construction Administration • Interior Design**



DOWNTOWN CHARM
Portsmouth, NH

**Municipal Approvals • Construction Documents
Construction Administration • Interior Design**



COMMERCIAL PROJECTS



PROVIDENT BANK *Portsmouth, NH*

**Municipal Approvals • Historic District Approvals •
Architectural Design Package • Construction
Administration • Commercial Interior Design**

Conference Space & Collaborative Space
Kitchen
Private Offices
Reception & ATM
Atrium



ALAND REALTY *Portsmouth, NH*

**Municipal Approvals • Historic District Approvals •
Architectural Design Package • Construction
Administration • Commercial Interior Design**

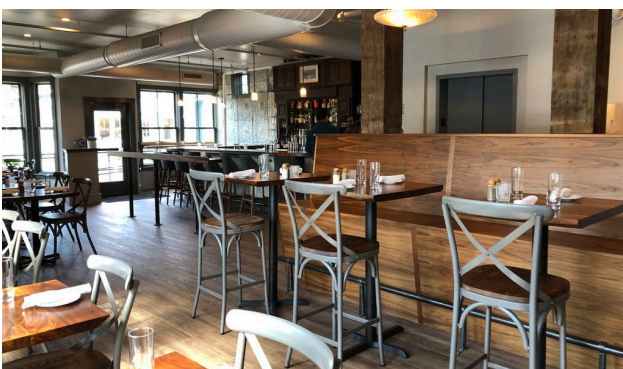
Conference Space
Break Room
Flex Bar Top workspace
Reception



CAMBRIDGE TRUST *Boston, MA*

Commercial Interior Design

Office Space
Break Room
Teller Line
ATM



PEPPERRELL COVE *Kittery, ME*

**Construction Documents • Commercial Interior Design •
Construction Administration**

3 Commercial Kitchens
2 Restaurants and 1 Event Center
Historic Renovation
Roof Top Bar and Deck



COMMERCIAL PROJECTS



WENTWORTH BY THE SEA PAVILION *Portsmouth, NH*

Construction Documents • Construction Administration • Interior Design

Restaurant with Commercial Kitchen
Timber Frame Construction
Public Space
1,068 square feet



PEASE FINANCIAL OFFICE *Portsmouth, NH*

Commercial Interior Design

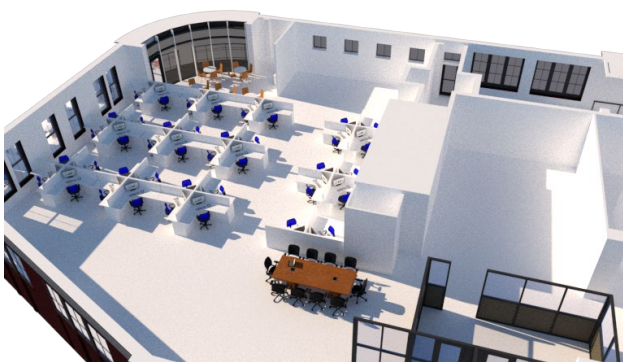
Conference Space
Kitchen
Private Offices
Reception
Roof top deck



OPTIMA BANK *Portsmouth, NH*

Commercial Interior Design

Conference Space
Break Room
Private Offices
Reception
ATM



GLOBAL TECHNICAL TALENT OFFICE *Portsmouth, NH*

Commercial Interior Design

Conference Space
Break Room
Training Room
Workspaces
Private Offices
Reception



AFFORDABLE HOUSING PROJECTS



PORTSMOUTH HOUSING AUTHORITY
Ruth Lewin Griffin Place

**Municipal Approvals • Historic District Approvals
Construction Documents • Construction Administration
Interior Design**



DOVER HOUSING AUTHORITY
Whittier Falls

**Municipal Approvals • Construction Documents
Construction Administration • Interior Design**



WATSON WOODS
Exeter, NH

**Municipal Approvals • Construction Documents
Construction Administration • Interior Design**



SOMERSWORTH HOUSING AUTHORITY
Charpentier Apartments

**Municipal Approvals • Construction Documents
Construction Administration • Interior Design**



AFFORDABLE HOUSING PROJECTS



SOMERSWORTH HOUSING AUTHORITY
Albert J. Nadeau Homes

**Municipal Approvals • Construction Documents
Construction Administration • Interior Design**



SOMERSWORTH HOUSING AUTHORITY
Filion Terrace

**Municipal Approvals • Construction Documents
Construction Administration • Interior Design**